

# *GRT 6012,5*

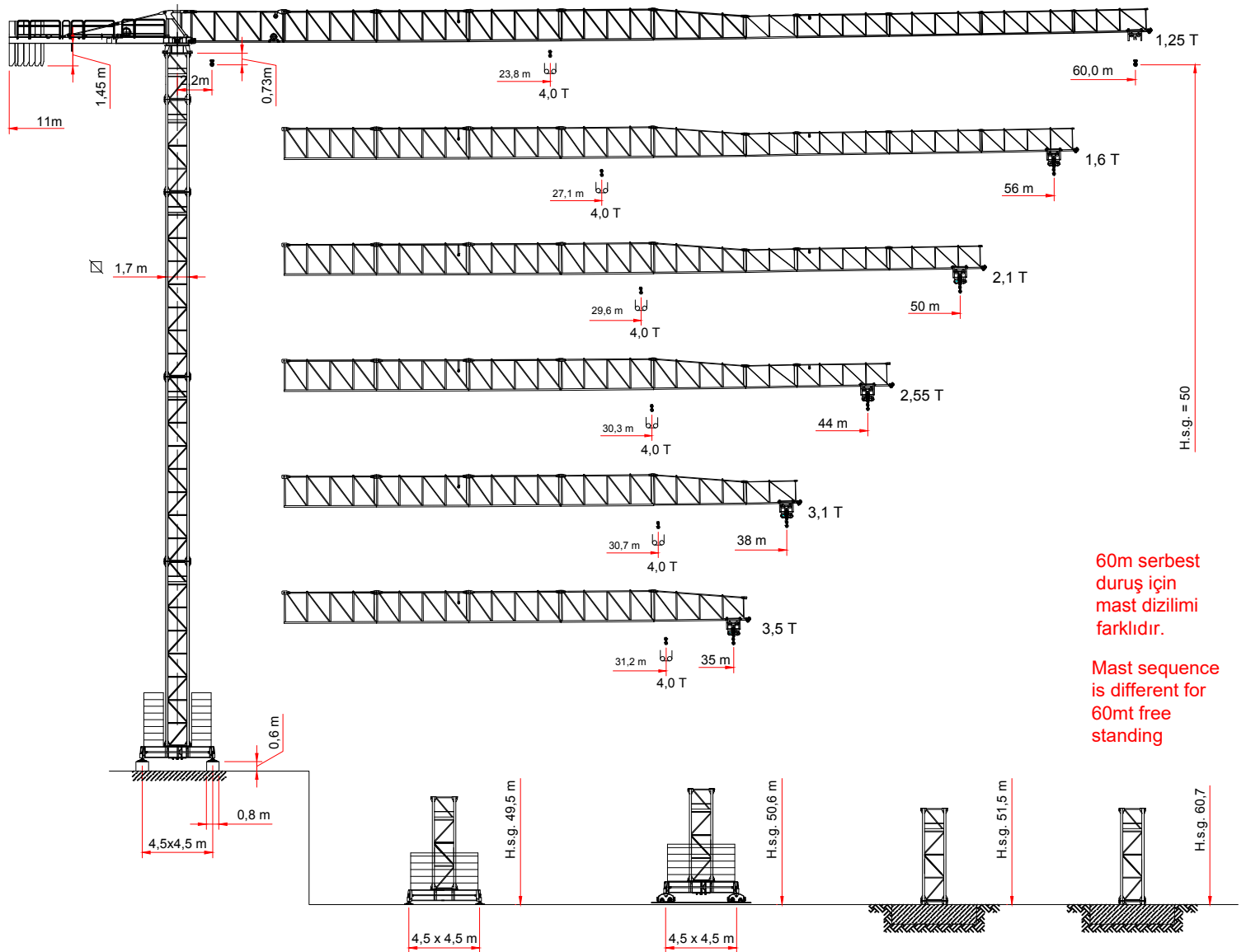
*8t*

**EN 14439-FEM 1001- C25 / D25- 4**

TEKNIK KATALOG  
TECHNICAL DATASHEET  
SCHEMA TECNICA  
FICHE TECHNIQUE  
TECHNISCHE SPEZIFIKATIONEN



Gergisiz Kule Vinç - Gru senza cuspide - Flat Top Crane - Grues sans poinçon - Kran ohne turmspitze



60m serbest duruş için mast dizilimi farklıdır.  
Mast sequence is different for 60mt free standing

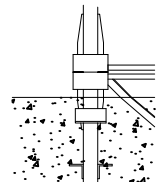
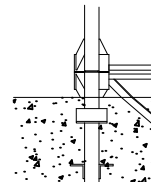
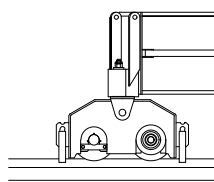
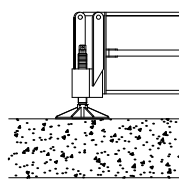
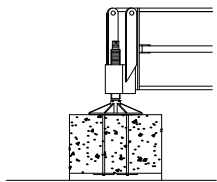
B 1

B 2

B 3

T 4

T 5



B1

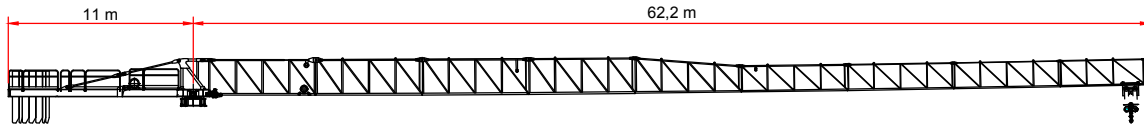
B2

B3

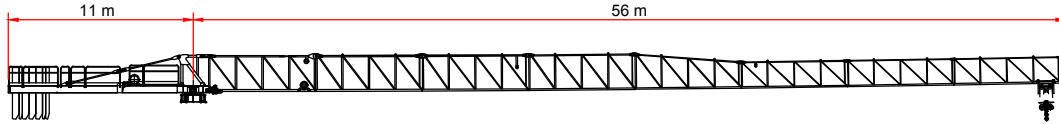
T4

T5

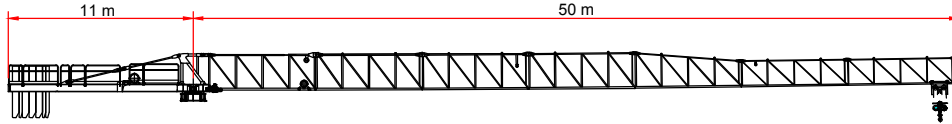
# YÜK DİYAGRAMI - DIAGRAMMI DI PORTATA - LOAD CHART - DIAGRAMME DE CHARGE UTILE - BELASTBEREITSDIAGRAMM



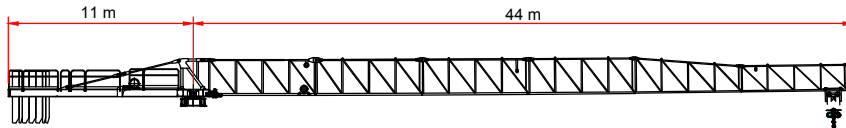
	JIB (m)	14	16	18	20	22	24	26	28	30	32	34	36	38	40	42	44	46	48	50	52	54	56	58	60
4 t → 23,1 m	t						3,96	3,60	3,29	3,03	2,79	2,59	2,41	2,53	2,10	1,97	1,85	1,75	1,65	1,56	1,47	1,40	1,32	1,26	1,25
8 t → 12,8 m	t	7,24	6,19	5,39	4,76	4,25	3,82	3,47	3,16	2,90	2,67	2,47	2,29	2,13	1,99	1,86	1,75	1,64	1,54	1,45	1,37	1,29	1,22	1,16	1,15



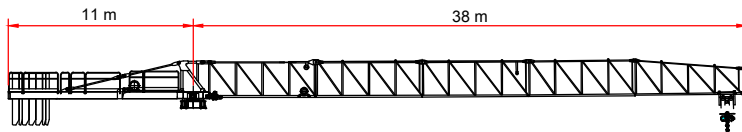
	JIB (m)	14	16	18	20	22	24	26	28	30	32	34	36	38	40	42	44	46	48	50	52	54	56
4 t → 27,1 m	t								3,84	3,54	3,27	3,04	2,83	2,65	2,49	2,34	2,20	2,08	1,96	1,86	1,77	1,68	1,60
8 t → 14,6 m	t	7,19	6,27	5,55	4,96	4,47	4,07	3,72	3,42	3,15	2,92	2,72	2,54	2,38	2,23	2,09	1,97	1,86	1,76	1,66	1,58	1,50	



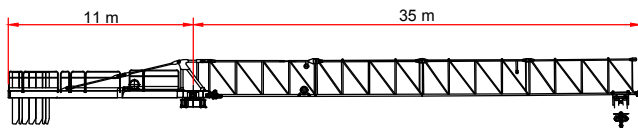
	JIB (m)	14	16	18	20	22	24	26	28	30	32	34	36	38	40	42	44	46	48	50
4 t → 29,6 m	t									3,93	3,64	3,39	3,16	2,96	2,78	2,62	2,47	2,33	2,21	2,10
8 t → 15,9 m	t	7,96	6,95	6,16	5,51	4,98	4,53	4,15	3,82	3,53	3,28	3,05	2,85	2,67	2,51	2,36	2,23	2,11	2,00	



	JIB (m)	14	16	18	20	22	24	26	28	30	32	34	36	38	40	42	44
4 t → 30,3 m	t										3,75	3,49	3,26	3,05	2,87	2,70	2,55
8 t → 16,3 m	t		7,16	6,34	5,68	5,13	4,67	4,28	3,94	3,64	3,38	3,15	2,95	2,76	2,60	2,45	



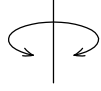
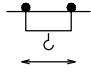







	JIB (m)	14	16	18	20	22	24	26	28	30	32	34	36	38
4 t → 30,7 m	t										3,80	3,54	3,30	3,10
8 t → 16,5 m	t		7,26	6,44	5,76	5,21	4,74	4,34	4,00	3,70	3,44	3,20	3,00	

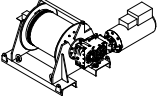




	JIB (m)	14	16	18	20	22	24	26	28	30	32	34	35
4 t → 31,2 m	t										3,89	3,62	3,50
8 t → 16,9 m	t		7,42	6,58	5,89	5,32	4,85	4,44	4,09	3,79	3,52	3,40	

TEMEL ÖZELLİKLER - CARATTERISTICHE AZIONAMENTI PRINCIPALI - MAIN DRIVE FEATURES

CARACTÉRISTIQUE ACTIONNEMENTS PRINCIPAUX - HAUPTBEDIENUNGSEIGENSCHAFTEN

		Hız - Velocità - Speed - Vitesse - Geschwindigkeit	Güç - Potenza - Power - Puissance - Leistung
Dönüş Rotazione Slewing Orientation Schwenken		0 → 0,70 r.p.m.	2 x 65 Nm
Şaryo Carrello Trolley Chariot Katzfahren		1. vites 8000 kg  4000kg  11 m/min 2. vites 8000 kg  4000kg  48 m/min 3. vites 4000 kg  2000kg  82 m/min	1 x 5,5 KW
Yürüyüş Traslazione Rail Translation Kranfahren		2,72 m/min (10Hz )	2 x 4,0 KW

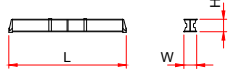
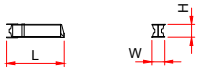


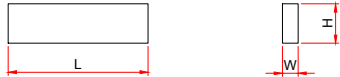
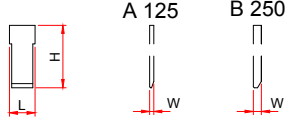


Tip Type Tipo Type Type		Güç Power - Potenza Puissance - Leistung		Halat Rope - Fune Cable - Seil	Vites				
		hp - CV PS - ch	kW			m	m/min.	(t)	m/min.
30-VF4 40		40	30	400	1	8,48	4,0	4,24	8,0
					2	42,44	4,0	21,22	8,0
					3	67,2	2,0	33,6	4,0
					4	92,4	1,25	46,2	2,5

TOPLAM GÜÇ TOTAL INSTALLED POWER FORZA MOTRICE TOTALE PUISSANCE TOTALE DES MOTEURS GESAMT-MOTORENLEISTUNG	400 V - 50 Hz 51 kW
---	------------------------

Sevkiyat Listesi - Distinta di Carico - Packing List - Liste de Colisage - Kolli-Liste

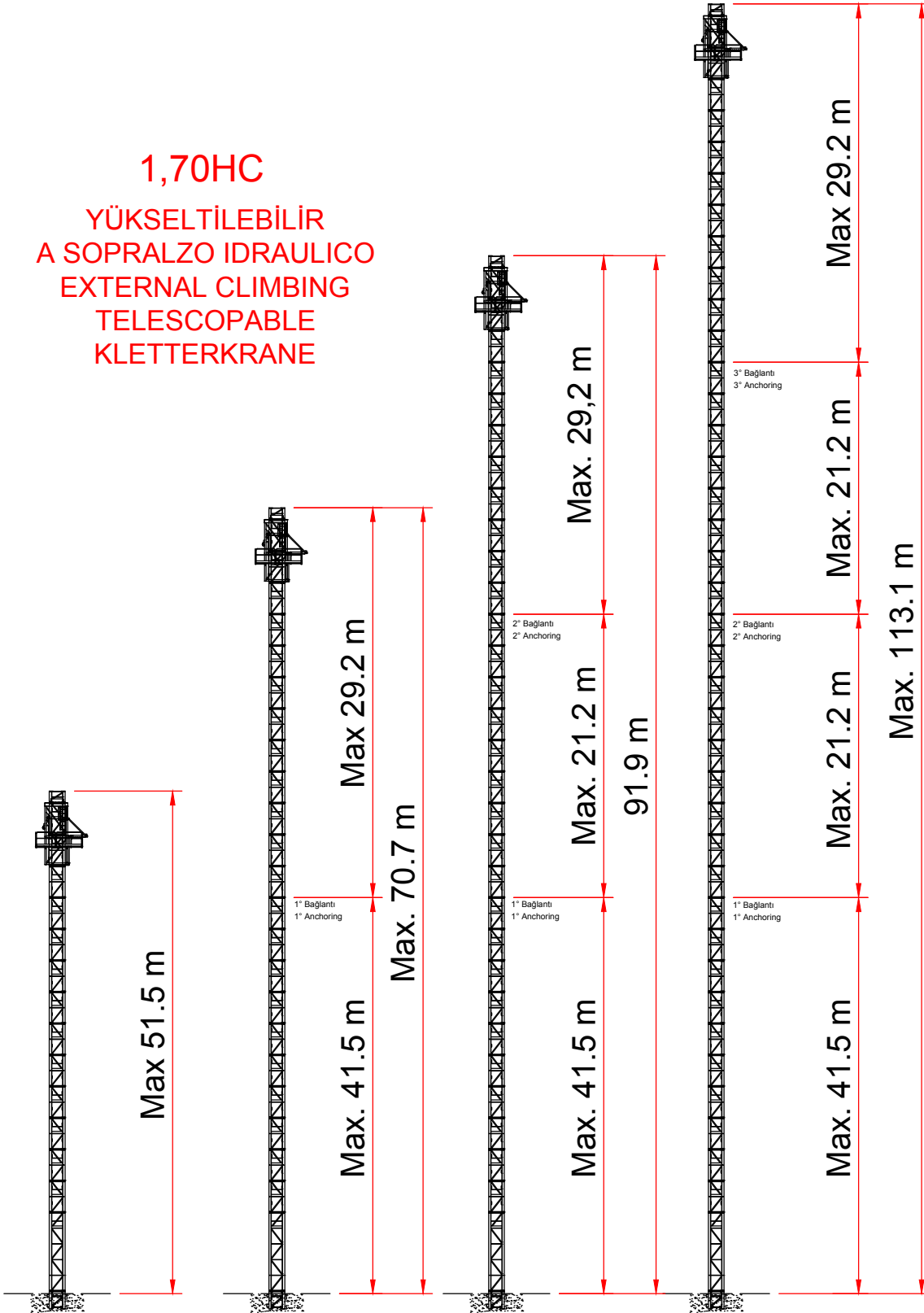
Parça Pieces	Açıklama Description	Çizim Sketch	Boyutlar Dimensions			Ağırlık Weight (Kg)	
			L	W	H	Unit.	Total.
1	Bom Elemento di freccia Jib element Elément de flèche Ausleger	N°0	6.050	1.370	2.150		1500
1		N°1	6.135	1.280	2.060		1136
1		N°2	6.155	1.150	2.060		755
1		N°3	6.155	1.150	2.060		606
1		N°4	6.155	1.150	2.060		525
1		N°5	6.060	1.150	2.030		496
1		N°5b	3.360	1.150	1.500		260
1		N°6	6.060	1.150	1.500		366
1		N°7	6.040	1.150	1.500		316
1		N°8	6.005	1.150	1.500		318
1		N°9	4.785	1.150	1.470		272
Bom Ausleger Freccia Jib			60 m 56 m 50 m 44 m 38 m 35 m	61.8 55.9 50.8 44.9 39.0 34.3	1.280 1.280 1.280 1.280 1.280 1.280	2.200 2.200 2.200 2.200 2.200 2.200	6550 6278 5960 5644 5278 5018
1	Dönüş grubu, kanca motoru, elektrik panosu Counterjib-turntable, hoisting winch, trolley jib, electrical box, a frame.		5.085	1.95	2.65		6360
1	Kuyruk Elemento controfreccia esterno. External counterjib. Externes gegenausleger.		7.215	1.435	1.470		2050
1	Kabin Cabina e ballatoio Cabin with access platform Cabine avec ensemble mat cabine Kabine		3.100	2.100	1.950	650	836
1	Mast Elemento di torre Tower element Elément de mature Turmstück		11.8	1.9	1.9		3752
			5.8	1.9	1.9		2000
			2.95	1.9	1.9		1010

Sevkiyat Listesi - Distinta di Carico - Packing List - Liste de Colisage - Kolli-Liste

Parça Pieces	Açıklama Description	Çizim Sketch	Boyutlar Dimensions			Ağırlık Weight (Kg)		
			L	W	H	Unit.	Total.	
1	ŞASE UZUN KOL TRAVE DI BASE PRINCIPALE BASE MAIN BEAM		4,5x4,5mt	6,530	0,710	0,760	2120	-
			3,8x3,8mt	5,535	0,710	0,760	1460	-
1	ŞASE KISA KOL SEMI-TRAVE DI BASE HALF BASE BEAM		4,5x4,5mt	3,200	0,590	0,770	1030	2060
			3,8x3,8mt	2,620	0,590	0,770	940	1880
2	YÜRÜYÜŞ TAKIMI BILANCIÑO DI TRASLAZ. FOLLE DRIVEN BOIGE			1.16	0.25	0.503	455	960
2	YÜRÜYÜŞ TAKIMI - MOTORLU BILANCIÑO DI TRASLAZ. MOTORIZ. BOGGIE MOTORISEE			1.16	0.59	0.503	680	1360
24	Şase taşı Blocco di zavorra Base ballast block Lest de base Grundballastblöcken			4.300	0.500	1.200	5.600	70800
2 5	Kuyruk taşı Blocchi di contrappeso Counterweight block Contre-poids Gegengewichtsbloecke		A 125 B 250	A 125 3.000 B 250 3.000	0.185 0.370	1.200 1.200	1250 2500	2500 12500
8 x 40' H.U.H =50mt	9 x 40' H.U.H =60mt	 Highcube	7 x H.U.H =50mt	8 x H.U.H =60mt	 L:13.60 W:2.45 H:3.00/2.70			

## 1,70HC

YÜKSELTİLEBİLİR  
A SOPRALZO IDRAULICO  
EXTERNAL CLIMBING  
TELESCOPABLE  
KLETTERKRANE



Farklı Dizilimler Mümkündür  
Altre Configurazioni Disponibili  
Other Configuration Available  
Autres configurations Disponibles  
Andere Konfigurationen Verfügbar

## MERKEZ/CENTER:

Merkez Mahallesi Zafer Caddesi B Blok No:12/2/1 GÜMÜŞOVA  
(Gümüşova OSB) DÜZCE

### İletişim / Contact

**Tel** : +90 380 533 7414 / info@tgmkulevinc.com.tr  
**Fax** : +90 380 553 7415  
**Gsm** : +90 536 064 4639 / teklif@tgmkulevinc.com.tr  
**Service** : +90 533 095 4455 / servis@tgmkulevinc.com.tr  
**International Trade** : +90 530 914 1158 / aslan@tgmkulevinc.com.tr



Özellikler ve teknik veriler katalogdakinden farklılık gösterebilir.

Dati illustrativi non impegnativi con riserva di modifica senza preavviso

Specifications and data not binding subject to modification without notice

Angaben und Beschreib ungunverbindlich andreungen vorbehalten ohne weitere mitteilung

Données techniques seulement indicatives modifications réservées sans préavis.